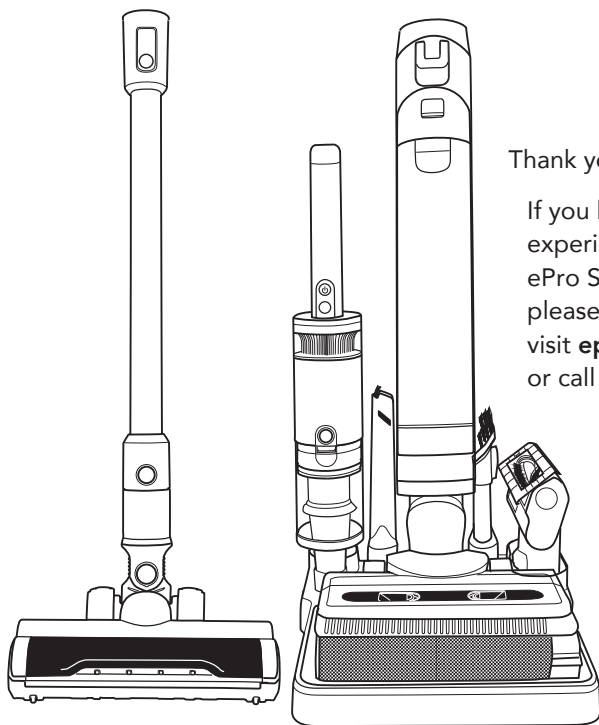


# CORDLESS

## 5-in-1 ULTIMATE VACUUM



Thank you for choosing **ePro Select**

If you have a question, or experience a problem with your ePro Select Vacuum purchase, please email [service@eproselect.com](mailto:service@eproselect.com) visit [eproselect.com/eproselect-support](http://eproselect.com/eproselect-support) or call 1-877-858-EPRO (3776)

PLEASE READ BEFORE RETURNING THIS PRODUCT FOR ANY REASON.

Model EV1751WD

## USER GUIDE



SCAN TO VISIT  
SUPPORT PAGE

# IMPORTANT SAFETY INSTRUCTIONS FOR HOUSEHOLD USE ONLY

## READ CAREFULLY BEFORE USE – SAVE THESE INSTRUCTIONS

**⚠ WARNING:** To reduce risk of injury, fire, electrical shock, or property damage from improper use of this appliance, carefully follow these instructions. This unit contains electrical connections and moving parts that could present risk if instructions are not followed.

**PLEASE READ THESE INSTRUCTIONS AND WARNINGS CAREFULLY AND KEEP THEM FOR REFERENCE:**

1. There are **NO** serviceable parts. **DO NOT** attempt to make your own repairs.
2. **DO NOT** use the hand vacuum on any liquids.
3. **DO NOT** immerse any parts in water or other liquids.
4. **DO NOT** use if vacuum, charger, or power cord is damaged.
5. Inspect vacuum, charging dock and power cord for any damage before use to avoid fire, explosion, or injury.
6. **DO NOT** use damaged vacuum or charging dock.
7. **DO NOT** use outdoors or on wet surfaces during charging. Use only on dry surfaces.
8. If vacuum cleaner is not working, or has been dropped, damaged, left outdoors, or immersed in water, **DO NOT use it, call Customer Support.**
9. **DO NOT** handle charger or vacuum cleaner if hands are wet.
10. **DO NOT** leave vacuum cleaner powered on when not in use or unattended
11. Keep the hand vacuum, power cord and charger away from heated surfaces.
12. Turn off vacuum before connecting to the charging dock.
13. Use only the charging stand and power supply provided with product.
14. Always use the charging dock on a flat and stable surface.
15. **DO NOT** incinerate this appliance as lithium-ion battery may explode and cause a fire.
16. **DO NOT** vacuum hard or sharp objects such as glass, nails, screws, or coins that could damage the vacuum cleaner.
17. **DO NOT** vacuum sawdust, drywall dust, ashes, or embers.
18. **DO NOT** vacuum objects that are smoking or burning, such as hot coals, cigarette or cigar butts, or matches.
19. **DO NOT** vacuum toxic chemicals such as chlorine bleach, ammonia, or drain cleaner.
20. **DO NOT** use the vacuum in an enclosed space where toxic or combustible vapors are present.
21. **DO NOT** immerse vacuum cleaner in water or other liquids.
22. Use extra care when cleaning on stairs.
23. **DO NOT** stretch or strain the power cord. Keep wall mount and power cord away from traffic areas and where it will not be stepped on or tripped over. Do not run over cord with the vacuum or close a door on it.
24. An extension cord is not recommended with this appliance.
25. Unplug the charging cord when not in use for extended periods of time.
26. Only use the power charger and removable lithium-ion battery pack provided with this product. Only replace the battery with one specified for this unit. Other types of batteries may not be compatible and may cause damage or injury.
27. **DO NOT** carry by the cord or disconnect from an outlet improperly.
28. Always grasp the plug at the power outlet and pull it straight out to disconnect.
29. Use this product only as directed in this User Manual.
30. Always turn off the vacuum cleaner before picking it up or carrying it, attaching, or detaching the charger, dust bin, filter, or accessory tools.
31. **DO NOT** place any objects into openings or obstructing openings.
32. **DO NOT** use if any opening is blocked; keep free of dust, lint, hair, or anything that could restrict airflow.
33. **KEEP OUT OF REACH OF CHILDREN.** This vacuum cleaner is not a toy, and must not be played with, cleaned, or operated by children or persons with reduced physical or mental capabilities. Close attention is necessary when used by or near children, pets or plants.
34. **DO NOT** operate without the dust bin and filter installed.
35. Keep hair, loose clothing, fingers, and all parts of body away from openings and moving parts.
36. Only use the attachments provided with this product. Use only as described in this manual
37. **DO NOT** charge at temperatures below 50°F (10°C) or above 104°F (40°C). Charging improperly or at temperatures outside of the specified range may damage the battery and increase the risk of fire.
38. Store the appliance indoors. **DO NOT** use or store it below 37.4°F (3°C). The appliance must be at room temperature before operating it.
39. Do not spray or apply any fragrances to the filter. Some fragrances contain chemicals that are flammable and can cause fire. To reduce the risk of fire, do not use a flammable or combustible liquid to clean a floor. Do not use without water tank and/or filter in place.

### DUST BIN/FILTERS/ACCESSORIES

40. Make sure the filter is completely dry after routine cleaning.
41. Make sure the dust bin and filter are reinstalled after routine maintenance.
42. Keep accessories free of blockages. Clean filter periodically to keep the vacuum running efficiently every time.
43. Always turn OFF the machine before connecting or disconnecting the motorized brush bar or mini motorized brush bar.

### BATTERY CAUTION

The Lithium Ion Battery included with this product is sealed and under normal circumstances does not pose any safety concerns. Under abusive conditions, liquid may be ejected from the battery; avoid contact. If contact accidentally occurs, flush with water. If liquid contacts eyes, additionally seek medical help. Liquid ejected from the battery may cause irritation or burns. In the unlikely event that the battery pack becomes damaged causing liquid to leak, **DO NOT touch the liquid and observe the following precautions:**

- Skin contact can cause irritation. Wash with soap and water
  - Inhalation can cause respiratory irritation. Breathe fresh air and seek medical advice.
  - Eye contact can cause irritation. Flush eyes with fresh water for 15 minutes. Seek medical attention.
  - Wear gloves to dispose leaking battery following local ordinances and regulations.
44. Do not use a battery pack or appliance that is damaged or modified. Damaged or modified batteries may exhibit unpredictable behavior resulting in fire, explosion or risk of injury.
  45. Do not expose a battery pack or appliance to fire or excessive temperature. Exposure to fire or temperature above 130°C may cause explosion.
  46. Follow all charging instructions and do not charge the battery pack or appliance outside of the temperature range specified in the instructions. Charging improperly or at temperatures outside of the specified range may damage the battery and increase the risk of fire.

# SAFETY WARNING

## SAVE THESE INSTRUCTIONS


1. This product is only for use on indoor surfaces. It is prohibited to install, charge and use this product outdoors, in bathrooms and around swimming pools.
2. This product should not be used by people with physical, sensory, or intellectual disabilities, or people without relevant experience and knowledge (including children), unless except for the supervision or guidance of a guardian to ensure that they can use the product safely.
3. Do not allow young children to use this product as a toy.
4. Do not touch the plug or any live part of the product with wet hands to avoid the risk of electric shock.
5. Do not move this product from the power cord or other cables, otherwise it may cause danger.
6. If the power adapter or plug is damaged, please stop using it. Please contact Customer Support to replace it to avoid occurrence of hazards.
7. When using, if you find leakage or motor temperature is too high and abnormal sound, such as the body overheating, strange sound, odor, weak suction, etc., should immediately stop using and call support.
8. When charging, please use the supplied storage/charging dock for charging, other types of chargers may lead to battery failure or the occurrence of extreme overheating and cause the battery to malfunction or cause thermal effects on the terminals.
9. If the product is not used for a long time, turn off the power and unplug the power adapter.
10. Do not use this product near or on the surface of flammable or explosive objects, as there is a risk of fire and explosion.
11. Do not use this product near working fireplaces and heaters to prevent deformation of the machine casing.
12. Do not use this product to absorb high temperature substances (unextinguished cigarette butts, matches or hot ashes, etc.), ultra-fine substances (such as lime, cement, wood chips, gypsum powder, ashes, charcoal powder, etc.), sharp fragments (such as glass, nails, pins, etc.), hazardous materials (such as solvents, descaling agents, etc.), and chemical substances (such as acids, etc.), flammable and explosive liquids (gasoline, alcohol products) and other substances with uncertain physical properties. The substances with uncertain physical properties.
13. Stains with strong grease, stickiness or staining like shoe polish, paint, pigment, etc. are not included in the scope of use of this product.
14. Please follow the instructions for cleaning solutions. If a large amount of detergent is added, more foam will be produced when using and may it may penetrate into the motor and cause danger. It is recommended to use low-foaming cleaners, which must not contain acids, alkaline solutions or environmentally harmful substances, it should not contain acids, alkaline solutions or substances that are harmful to the environment.
15. Keep the cleaner out of the reach of children. If the cleaner accidentally gets into the eyes, rinse thoroughly with water. In case of accidental ingestion, seek medical attention immediately.
16. Do not disassemble the closed machine by yourself, there are no parts in the machine that can be repaired by customers, and do not try to change the performance of the machine, otherwise it will lead to danger.
17. Do not use a voltage that does not correspond to the specifications of this product, otherwise there will be damage to the motor, and may cause injury to the user.
18. Do not shake the machine up and down or collide violently, and do not tilt the machine to one side or lay it flat to prevent waste/debris from flowing into the motor.
19. The product body, brush contains electrical components, can not soak or rinse, otherwise there is a risk of fire and electric shock due to short-circuiting of the machine. Electricity accident.
20. Prohibit the use of this product when the brush, water bucket, sewage bucket and cartridge are not installed.
21. Please ensure that the machine is turned off before replacing the brush.
22. After using the machine, please clean the waste tank in time to keep the ventilation path open, to avoid blocking the suction power drop, motor heating, thus affecting the service life of the machine. Thus affecting the service life of the machine.
23. After using the machine, please put it in a dry place for storage. A wet environment will affect the insulation and service life of the electrical appliances.
24. To prevent tripping, the machine should be placed against the wall after use.
25. Please regularly check the smooth flow of the suction port, if there is a blockage, please clear it in time to avoid blocking the suction power to reduce the impact on the performance of the use of the machine.
26. It is forbidden to add disinfectant, per-acetic acid, bleach and other corrosive liquids or disinfectants in the water tank, which may cause irreversible damage to the machine.
27. Do not pull or carry by cord, use cord as a handle, close a door on cord, or pull cord around sharp edges or corners. Do not run appliance over cord.
28. Do not unplug by pulling on cord. To unplug, grasp the power adapter, not the cord.
29. Do not use without water tank and/ or filter in place.
30. Prevent unintentional starting. Ensure the switch is in the off-position before connecting to battery pack, picking up or carrying the appliance. Carrying the appliance with your finger on the switch or energizing appliance that have the switch on invites accidents.
31. Disconnect the battery pack from the appliance before making any adjustments, changing accessories, or storing appliance. Such preventive safety measures reduce the risk of starting the appliance accidentally.
32. Recharge only with the charger specified by the manufacturer. A charger that is suitable for one type of battery pack may create a risk of fire when used with another battery pack.
33. Use appliances only with specifically designated battery packs. Use of any other battery packs may create a risk of injury and fire.
34. When battery pack is not in use, keep it away from other metal objects, like paper clips, coins, keys, nails, screws or other small metal objects, that can make a connection from one terminal to another. Shorting the battery terminals together may cause burns or a fire.
35. Do not modify or attempt to repair the appliance or the battery pack except as indicated in the instructions for use and care. Contact Customer Support.

# INTRODUCTION

This ePro Select 5-in-1 cord-free and powerful wet/dry vacuum system features an intelligent digital motor with LED display, interchangeable floor heads, and (2) fast-charging removable Li-Ion battery packs. It's lightweight and versatile and easily converts from whole home cordless wet/dry to stick vacuum to handheld power vac for spot cleaning.

## Parts & Controls

① Removable Battery Release Switch (on battery)

② Power Button 

③ Mode Button

④ LED Display

⑤ Interchangeable Motor with Handle

⑥ Dust Bin Release Button

⑦ Dust Bin (200ml)

⑧ Wet/Dry Handle Locking Tab

⑨ CLEAN Water Tank Release Button

⑩ Wet/Dry Waste Bin (with handle)

⑪ Wet/Dry CLEAN Water Tank

⑫ Wet/Dry Roller Brush Cover Release

⑬ Wet/Dry Roller Brush (installed)

⑭ Motorized Brush Roller with LED Lights

⑮ Brush Roller (installed)

⑯ Mini Motorized Brush Roller

⑰ Long Crevice Tool

⑱ Combo 2-in-1 Brush Tool

⑲ Spare Rechargeable Battery Pack

⑳ Spare Wet/Dry Roller Brush

㉑ HEPA Filter

㉒ Spare Wet-Dry FOAM Filter

㉓ Cleaning Brush

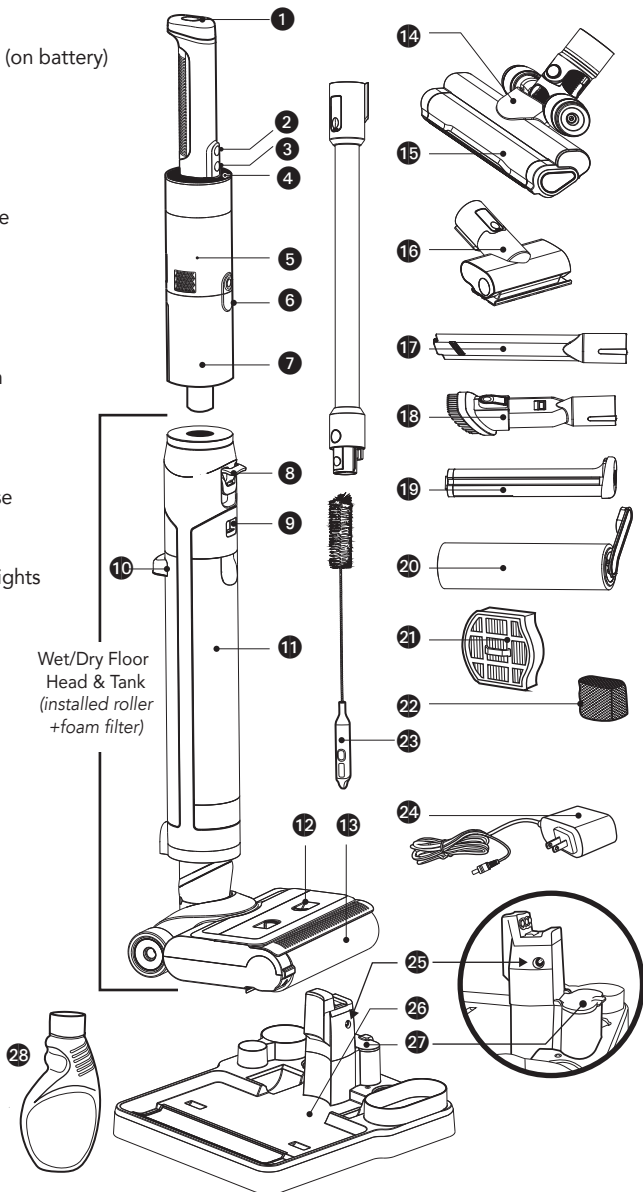
㉔ Power Adapter

㉕ DC Power Port

㉖ Storage/Charging Base

㉗ Spare Battery Charging Dock

㉘ Sample Cleaning Solution



The ePro Select Cordless 5-in-1 Ultimate Vacuum easily transitions from a wet/dry vacuum floor washer to a convertible stick floor or hand vacuum sharing one common motor housing.



**INTERCHANGEABLE MOTOR HOUSING**  
is used to power both the wet/dry vacuum and the convertible stick to hand vacuum.

## Floor to Ceiling

- Connect the **2-in-1 Brush/Crevice Tool** (C) to the **Extension Rod** (F) for drapes and blinds.
- Connect the **Long Crevice Tool** (D) to the **Extension Rod** (F) for baseboards and trim, high and low corners.

- Connect the **Motor Housing** (A) to the **Mini Motorized Brush Roller** (E) for stairs and small space surfaces.
- Attach the **2-in-1 Brush/Crevise Tool** (C) for dressers, shelves, and keyboards.
- Use the **Long Crevice Tool** (D) or **2-in-1 Brush/Crevise Tool** (C) attachments for deep-cleaning the car, truck or RV interiors, under seats, or hard to reach spots.
- Connect the **Interchangeable Motor Housing** (A) to the **Extension Roll** (F) and the **Stick Vacuum Floor Head** (G) for hard floors and low-pile carpets.

Attach the **Interchangeable Motor Housing** (A) to the **Motorized Wet/Dry Roller Brush with Water Tanks** (B) for hard, sealed floor surfaces.

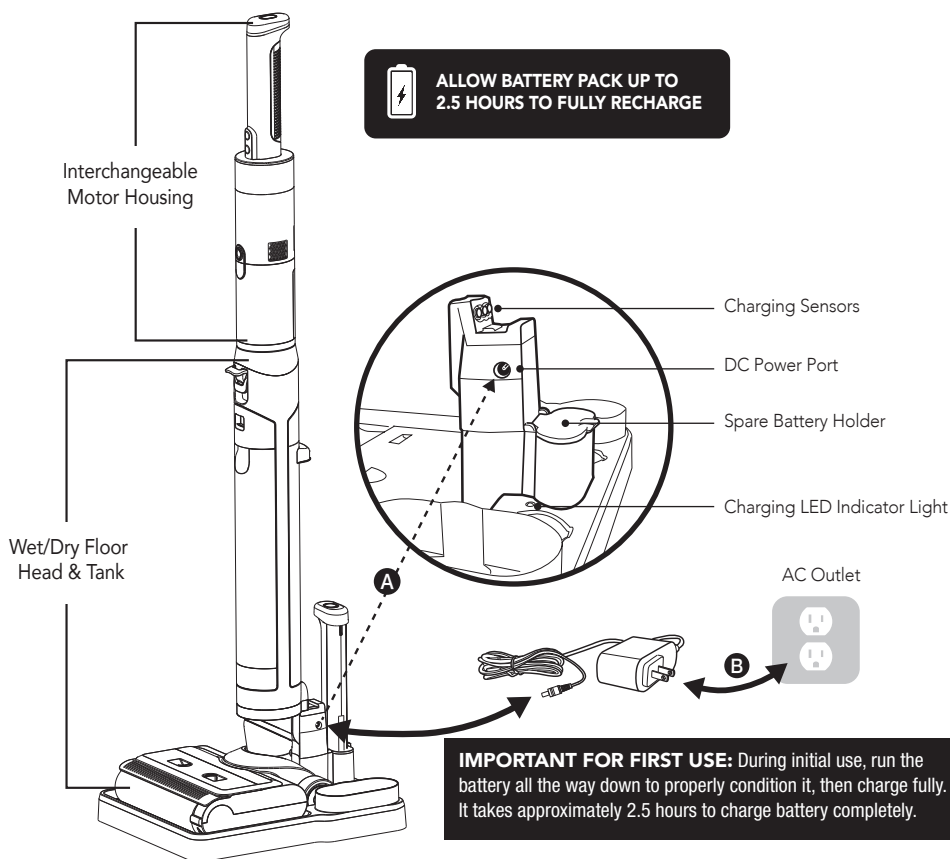


**CAUTION:** Before assembling or disassembling unit and accessories, always ensure that the appliance has been unplugged from the wall outlet! Make sure that the appliance is switched off and unplugged.

# BATTERY CHARGING

Before first use the detachable lithium-ion battery must be fully charged. The convenient Charging and Storage Base neatly holds the cord-free vacuum with interchangeable accessories and allows plug-in charging in less than 2.5 hours.

- 1 Place Storage/Charging Base next to an electrical outlet.
- 2 Make sure INTERCHANGEABLE MOTOR is attached to host WET/DRY-TANK and lift the whole machine vertically into Storage/Charging Base
- 3 Connect one end of the POWER ADAPTER to the CHARGING PORT of the stand (A), and the other end to the power adapter (B) to an electric outlet. You will hear the audio prompt "**Start charging**", indicating that charging has begun (After full charge "**100%**" flashes on/off in 30-second intervals).
- 4 Allow battery pack up to 2.5 hours to fully recharge.
- 5 Unplug when not in use for extended periods of time.

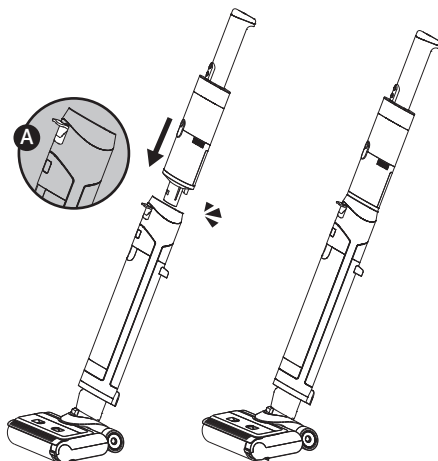


**SPARE BATTERY HOLDER charging:** insert the battery pack into the battery pack charging slot of the spare battery holder, connect the power adapter, the RED light will be on and start charging, the GREEN light will be on when it is fully charged.

## ASSEMBLY: Wet/Dry Vacuum

### Wet Dry Assembly

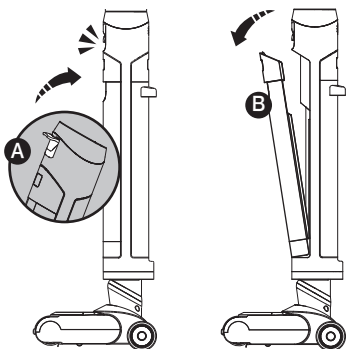
- 1 Open the release latch (A) upward, insert the Interchangeable Motor Housing into the Wet/Dry mainframe with force until you hear a "Click" sound.
- 2 Press the RELEASE latch downward to LOCK the Interchangeable Motor housing in place and prevent it from slipping off the body.
- 3 DISASSEMBLY: Pull the release latch upward and pull out the Motor Housing.



## WATER TANK DISASSEMBLY AND INSTALLATION

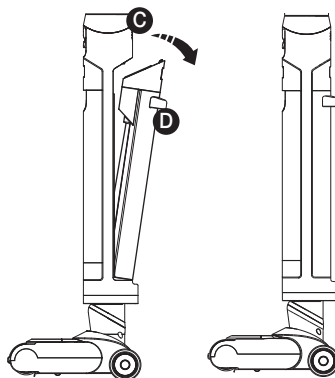
### Clean Water Tank

- 1 **TO REMOVE CLEAN WATER TANK:** use one hand to hold the body, use the other hand to trigger the CLEAN WATER TANK RELEASE button (A). Then, pull tank away from unit (B).
- 2 **TO REINSTALL:** Put the bottom of the CLEAN WATER TANK into the body of the opening support position, and then gently push the clean water tank into position until you hear a "Click" to secure tank.



### Dirty Water/Waste Tank

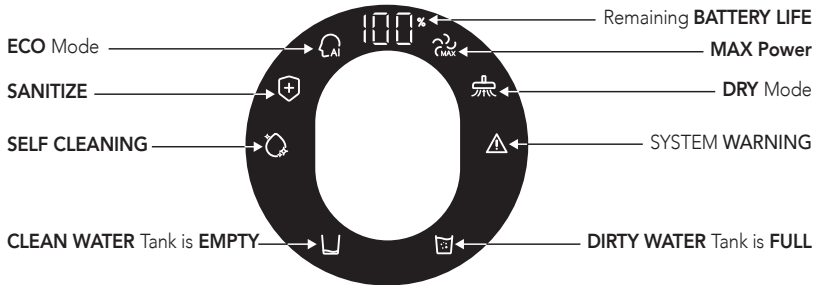
- 1 **TO REMOVE WASTE TANK:** one hand to hold the body, the other hand to press the waste tank release button (C). Then, pull out using handle (D). Empty Waste Tank, rinse with clean water.
- 2 **TO REINSTALL:** put the bottom of the waste tank into the body of the opening support position, and then gently push the waste tank until you hear a "Click" to secure tank in unit.



# OPERATIONAL USE: Wet/Dry Vacuum

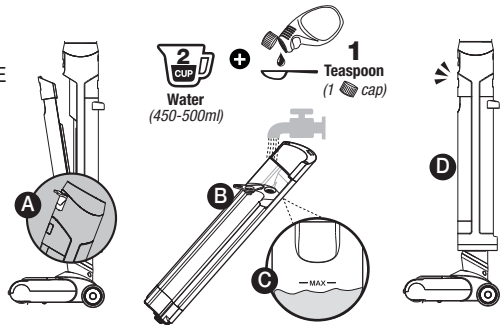
## LED Display

- 1 Ensure all parts for the wet/dry vacuum are installed before use.
- 2 Press the Power Button to operate. The default mode is **ECO** (Standard suction) to optimize run time.
- 3 Press the mode switch to select from one of 4 modes (**ECO**, **MAX**, **DRY**, **SANITIZE**).



## Filling the Clean Water Tank

- 1 Press and hold the Clean Water Tank **RELEASE** button (A) to remove the Clean Water Tank.
- 2 Open the lid of the water tank (B) and fill with clean water to any level **BELOW** the **MAXIMUM WATER LEVEL** line (C).
- 3 Close the water tank cover, confirm it is in place, and then put it back until you hear a "**Click**" (D).



## Using Tap Water **Without** Cleaning Solution

**SANITIZE** mode creates electrolyzed water from regular tap water for enhanced cleaning and disinfecting floor surfaces without using detergents. It provides a more eco-friendly, cost-effective cleaning.

## Using Multi-Surface Cleaning Solution

- 1 Combine **2 Cups (500ml)** of **clean WATER** + **1 Teaspoon (or 1 cap)** of any **Multi-Surface cleaning solution** formulated for Wet/Dry vacuums into a container.
- 2 Add the mixed solution to the Clean Water tank (B). Do not exceed the **MAXIMUM WATER LEVEL LINE** (C).



- Do not add any cleaner not intended for use with wet/dry vacuums.
- Do not exceed the ratio of the cleaning fluid to water or excess foaming may damage the vacuum.
- Do not add hot water over 140°F (60°C).
- If too much cleaning solution is added, excessive foam will be produced during use, which could penetrate the motor and cause damage to the appliance.



**CAUTION:** Cleaning solutions should be kept out of the reach of children. If cleaning solution comes in contact with eyes, rinse thoroughly with water; if accidentally swallowed, seek medical attention immediately. Waste water and cleaning solution disposal should comply with local environmental regulations.

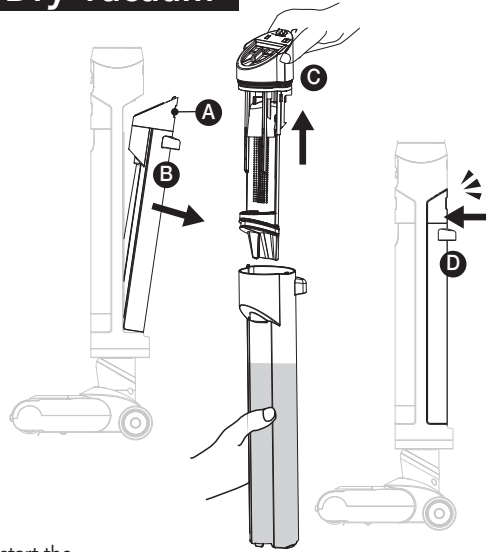


## OPERATIONAL USE: Wet/Dry Vacuum

### Dumping the Waste Tank

- 1 Press and hold the Waste tank release button (A) to remove the Waste tank (B).
- 2 Grasp the Waste tank with one hand, and gently pull out the Waste tank filter assembly with the other hand upward (C).
- 3 After the Waste is poured out, install the Waste tank back into the body until you hear the "Click" sound so the tank is back in position (D).

**TIP:** Please clean the dirty water tank and filter assembly after each use, and dry it out completely before putting it back into the machine. Never run the wet/dry vacuum without the filter in place.



### Self-Cleaning and Drying Modes

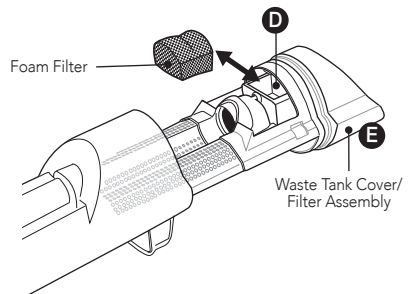
There are two drying modes:

- **QUICK DRY mode:** Press the MODE button to start the self-cleaning cycle + rolling brush drying.
- **Full Clean & Dry Cycle:** Press and hold the MODE button for 3 seconds to start a full interior self clean and dry cycle.

- 1 Put the unit into the charging storage stand, connect the power adapter. Make sure there is more water in the CLEAN WATER tank and less < 1/3 of the waste in the DIRTY WATER tank.
- 2 Press the MODE button to start Self-Cleaning Cycle, voice prompt "Drying brush roller" with heat drying, power + self-cleaning icon (E) on the display; during the self-cleaning process, press the MODE or POWER button to stop self-cleaning.
- 3 After the end of self-cleaning, the audio prompt will indicate "Self-cleaning is complete, please clean the sewage tank."
- 4 The audio prompt will follow with "Start drying", enter the DRYING cycle; press the POWER button during the drying process to stop the drying cycle.
- 5 When starting the Full Clean & Dry cycle, if the dirty water tank is not cleaned after the end of self-cleaning (1 minute time interval) the audio prompt will repeat "Start drying"; Press the POWER button during the drying cycle to end.





### Cleaning the Wet/Dry FOAM FILTER

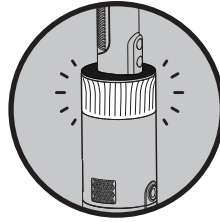
- 1 Press and hold the Waste tank RELEASE button (A) to remove the Waste tank (E).
- 2 Grasp the Waste tank with one hand, and gently pull out the Waste tank filter assembly with the other hand upward (B).
- 3 Lay the Waste Tank Cover/Filter assembly down and remove the small foam filter from its compartment (D).
- 4 Re-install the Waste tank back into the body until you hear the "CLICK" sound so the tank is back in position.



# OPERATIONAL USE: Wet/Dry Vacuum

## LED Light Display

- **ECO mode:** BLUE light,  icon on display
- **MAX POWER mode:** PURPLE light,  icon on display
- **DRY SUCTION mode:** BLUE light,  icon on display
- **SANITIZE mode:** BLUE light,  icon on display

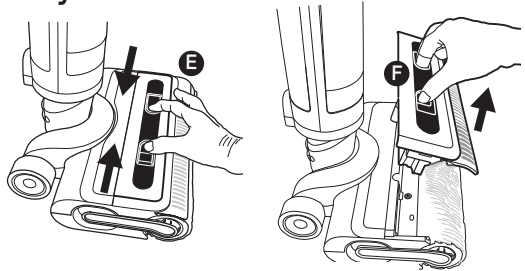


## Audio Prompts

- While in operation, "**Shutdown In**" audio prompt is activated when the battery runs low. The vacuum continues to run for a few seconds to clear the debris. It is then followed by "**has shut down, please put back to the charging station and self-cleaning.**"
- When machine is operation upright (90 degrees upright) an audio prompt "**Standby**" is activated and the POWER button will not work while in this position. After 1 minute in the upright position, the audio prompt will announce "**has been shut down, please put back to the base charging and self-cleaning.**"
- When the CLEAN WATER TANK RUNS LOW, an audio prompt is activated to advise "**Clean water tank is short of water, please add water.**" POWER OFF the vacuum and follow instructions on previous pages to REMOVE the clean water tank, REFILL it, and REINSTALL as instructed.
- When the WASTE WATER TANK is FULL, the audio prompt will indicate "**Sewage tank is full, please Clear the sewage tank,**" POWER OFF the vacuum, REMOVE the waste tank, DISCARD the debris, RINSE with clean water and REINSTALL as instructed.

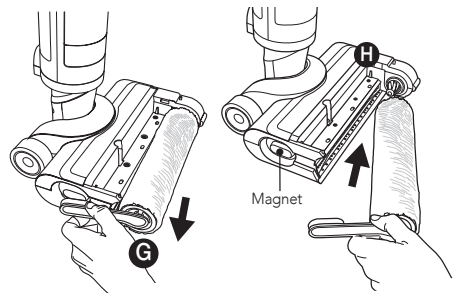
## ROLLER BRUSH COVER Disassembly and Installation

- 1 Brush cover REMOVAL: push both brush cover release buttons (E) towards each other and lift cover upward (F) to remove.
- 2 Align the brush cover to the base and press down, after hearing the "Click" sound, the installation is successful.



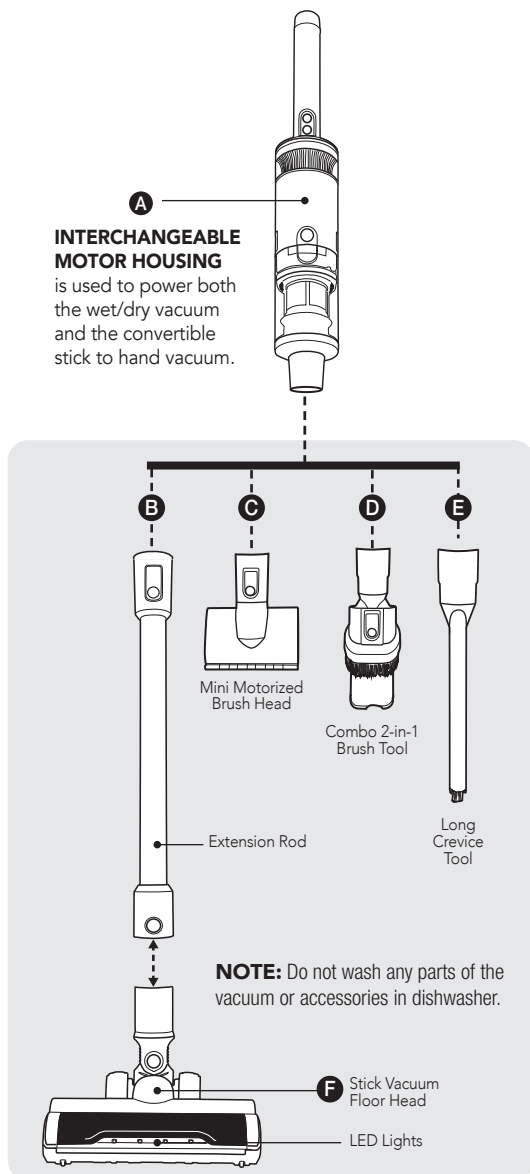
## BRUSH ROLLER Removal and Installation

- 3 To remove, hold the rolling brush connecting rod outward, and then slowly pull out the brush roller (G).
- 4 To install, hold the connecting rod of the left end of the roller brush by hand, align the right end of the roller brush (H) into the ground brush, then put the connecting rod of the left end of the roller brush 90° inward (magnet will automatically secure the installed roller brush).



## OPERATIONAL USE: Convertible Stick/Hand Vacuum

The versatile ePro Select Cordless 5-in-1 Ultimate Vacuum can clean multiple flooring surfaces and higher vertical surfaces that are hard-to-reach using the stick and hand vacuum configurations.



### Floor to Ceiling

#### Use Extension Rod

- Connect the **2-in-1 Brush attachment** **D** to the **Extension Rod** **B** for drapes and blinds.
- Connect the **Long Crevice Tool** **E** to the **Extension Rod** **B** for baseboards and trim, high and low corners.

### Smaller Spaces

#### Use as Hand Vacuum

- Connect the **Motor Housing** **A** to the **Mini Motorized Brush Roller** **C** for stairs and small space surfaces.
- Attach the **2-in-1 Brush/Crevice Tool** **D** for dressers, shelves, and keyboards.
- Use the **Long Crevice Tool** **E** or the **2-in-1 Brush/Crevice** **D** attachments for deep-cleaning the car, truck or RV interiors, under seats, or hard to reach spots.
- Connect the **Interchangeable Motor Housing** **A** to the **Extension Rod** **B** and the **Stick Vacuum Floor Head** **F** for hard floors and low-pile carpets.

**NOTE:** Four (4) bright LED lights on floor head help to illuminate the cleaning path while operating.



**ATTENTION:** Do not allow the vacuum to remain in one spot for any length of time when the brush roller is turning. Damage to carpet may occur.

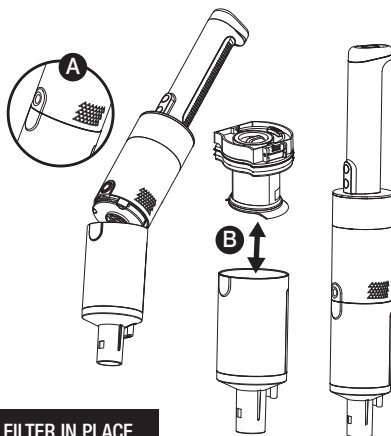
## OPERATIONAL USE: Convertible Stick/Hand Vacuum

### Interchangeable Motor Housing

The motor housing is used to power both stick vacuum and all accessories and contains the dry dust bin.

If suction power seems to diminish, it may be time to empty the dust bin or clean or replace the HEPA filter.

- 1 **DISASSEMBLY:** If you want to remove the dust bin, press the dust bin release button (A) to detach the dust bin.
- 2 Remove filter assembly and empty dust bin into trash can.
- 3 After emptying dust bin make sure to install the filter assembly (B) first: align the clips on the back of the hand-held vacuum with the slot of the dust bin
- 4 Gently close the dust bin until you hear the "Click" sound, then the installation is successful.

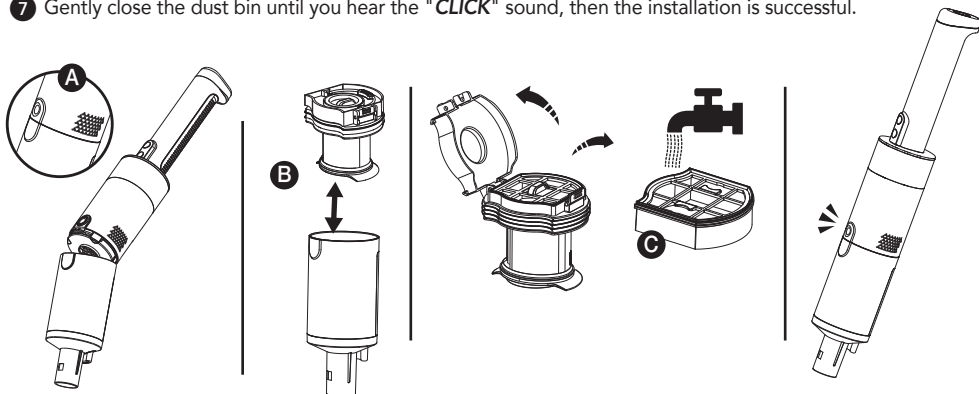


**⚠ WARNING: NEVER OPERATE THE APPLIANCE WITHOUT DUST BIN FILTER IN PLACE.**

## CLEANING AND MAINTENANCE

### Cleaning the Dust Bin Filter Assembly

- 1 Press the Dust Bin RELEASE button (A) to detach the motor housing dust bin.
- 2 Remove the filter assembly (B) and empty the dust bin.
- 3 Remove the HEPA filter (C) from the filter assembly  
(Clean the HEPA and filter assembly by rinsing with water (no soap or detergent).
- 4 After rinsing with water let the HEPA filter and filter assembly DRY thoroughly.
- 5 Align the shape of HEPA filter into the filter assembly,
- 6 Place assembly back into the dust bin and put them back into the motor housing.
- 7 Gently close the dust bin until you hear the "CLICK" sound, then the installation is successful.



**⚠ WARNING: Do not operate vacuum cleaner with damp or wet filters or without filter in place.**

# LITHIUM-ION BATTERY PACK MAINTENANCE & REPLACEMENT

## BATTERY PROTECTION FEATURES

Lithium-ion batteries deliver fade free power for their entire run time. Lithium-ion products will not gradually lose power due to decreasing battery charge. Instead, power from the battery pack will drop from full to zero once the full charge has been drained from the battery. Once this happens, recharging of the battery is required. It is not necessary to drain the battery pack completely before recharging.

Lithium-ion battery packs are designed with features that protect the lithium-ion cells and maximize battery life. If your vacuum stops during use, release the trigger to reset and resume operation. If the tool still does not work, the battery needs to be recharged.

### For battery pack storage longer than 30 days:

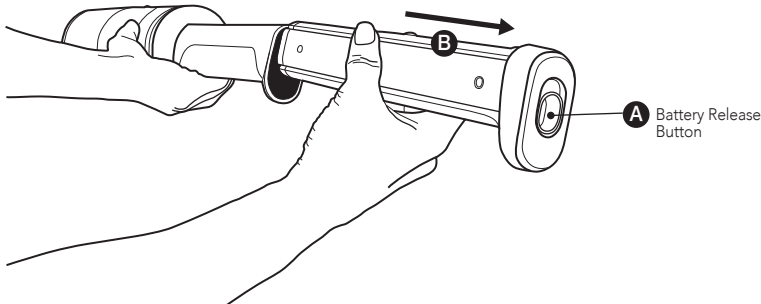
- Store the battery pack where the temperature is below 80° F and away from moisture.
- Store battery packs in a 30% - 50% charged condition.
- Every six months of storage, charge the pack as normal.

## DETACHABLE/ REPLACEABLE BATTERY

These batteries have been designed to provide maximum trouble-free life. However, like all batteries, they will eventually wear out. Replacement batteries are available for purchase on [Samsclub.com](https://www.samsclub.com).

### REMOVING/INSTALLING OF BATTERY:

- 1 While pressing down on the BATTERY RELEASE button (A).
- 2 Pull upward motion to detach battery (B).
- 3 Hold hand vacuum and align the grooves of the battery with slot into the handle until you hear a "**CLICK**" sound to indicate battery is secured.



## BATTERY REMOVAL & DISPOSAL

This cordless rechargeable hand vacuum includes a Lithium-Ion battery. You can not dispose of this product with household waste. It must be disposed of safely at a hazardous waste collection site, recycling facility or an electronic retailer that recycles. Check your local or state laws for proper disposal procedures.

# TROUBLESHOOTING

OBSERVATION	POSSIBLE CAUSE	SOLUTION
<b>Not Operational</b>	<ul style="list-style-type: none"> <li>• The handle is not installed properly</li> <li>• No or low battery</li> <li>• Roller brush is not installed properly or is tangled</li> <li>• The dirty water tank is not installed properly</li> <li>• The dirty water tank is full</li> </ul>	<ul style="list-style-type: none"> <li>• Reinstall and make sure it is in place before use</li> <li>• Fully charge the battery before use</li> <li>• Reinstall the roller brush or clean the roller brush</li> <li>• Reinstall the waste water tank</li> <li>• Dump the waste water, rinse and reinstall</li> </ul>
<b>Weak Suction Power</b>	<ul style="list-style-type: none"> <li>• The filter is clogged</li> <li>• Parts may not be installed properly</li> <li>• Roller brush gets tangled in hair</li> <li>• There may be blockage in the pipe</li> </ul>	<ul style="list-style-type: none"> <li>• Clean the filter</li> <li>• Reinstall all parts per instructions</li> <li>• Remove the roller brush from the entanglement before use</li> <li>• Clean the pipe</li> </ul>
<b>Unusual Motor Sound</b>	<ul style="list-style-type: none"> <li>• Dirty water tank is too full</li> <li>• The suction port is blocked</li> </ul>	<ul style="list-style-type: none"> <li>• Empty the dirty water tank before use</li> <li>• Clear obstacles in the suction port</li> </ul>
<b>No battery level icon when charging</b>	<ul style="list-style-type: none"> <li>• The power adapter is not connected to the power socket</li> <li>• The power adapter and the charging base are not connected properly</li> <li>• The main unit and the charging base are not docked properly</li> </ul>	<ul style="list-style-type: none"> <li>• Check if the power adapter is plugged in</li> <li>• Check if the connection is intact</li> <li>• Confirm if the main machine is placed correctly</li> </ul>
<b>No water is discharged</b>	<ul style="list-style-type: none"> <li>• The clean water tank is not installed properly/the clean water tank is short of water</li> </ul>	<ul style="list-style-type: none"> <li>• Reinstall or add water to the clean water tank</li> </ul>
<b>Unable to operate Self-Cleaning</b>	<ul style="list-style-type: none"> <li>• The roller brush may be stuck by large particles</li> <li>• No or less than 15% battery power</li> <li>• Dirty water tank is not installed properly or is full</li> <li>• Clean water tank is not installed properly or water level is too low tank is short of water</li> </ul>	<ul style="list-style-type: none"> <li>• Open the roller brush cover to check and clean</li> <li>• Fully charge the battery or have 15%+ for self cleaning</li> <li>• Reinstall or dispose of the dirty water tank</li> <li>• Reinstall or add water to the clean water tank</li> </ul>
<b>DIRTY WATER tank icon flashes</b>	<ul style="list-style-type: none"> <li>• The dirty water tank is full or the pipe is blocked</li> </ul>	<ul style="list-style-type: none"> <li>• Clean the dirty water tank or clean the waste pipe</li> </ul>
<b>System Warning icon flashing</b>	<ul style="list-style-type: none"> <li>• The roller brush is entangled</li> <li>• The pipe is blocked</li> </ul>	<ul style="list-style-type: none"> <li>• Clean the roller brush</li> <li>• Clean the machine pipe</li> </ul>

## TECHNICAL SPECIFICATIONS

Battery Type: **Lithium-Ion battery**  
 Voltage/Capacity: **21.6V / 2500mAh**  
 Dust Bin Capacity: **Approx. 200ml**  
 Operating Time: **Approx. 15-30 minutes**  
 Suction Power (handheld/Floor-head):  
**13,000 Pa/8,000 Pa**  
 Sound level: **approx. 83dBA**  
 Charging Time: **2.5 hours**  
 Power: **200W**  
 Input: **100-240V-50/60Hz 0.8A Max**  
 Output: **27V-1000mA (or 1.0A)**

### Hand Held Dimensions (WDH):

3.31" x 3.23" x 21"  
 (84 x 82 x 533mm)

### Assembled Turbo Stick Vacuum (WDH):

10.24" x 7.2" x 46.7"  
 (260 x 183 x 1185mm)

### Assembled Wet Dry Vacuum (WDH):

10.24" x 9.65" x 45.1"  
 (260 x 245 x 1145mm)

# TERMS AND CONDITIONS

## 2-YEAR Limited End User Warranty

ePro USA, LLC., (the "Company") warrants that their products (the "Product") are free of defects in material and workmanship for a period of 2-YEARS (the "Warranty Period") from the date of purchase by end user. In the event that the Product qualifies for coverage under this warranty, the Company at its option and at no charge may either repair or replace the Product (not including, shipping, handling, delivery or installation) with an identical product or product having similar features and functionality as determined by the Company. The Company does not warranty the installation, maintenance, or service of its Product. The Company is not responsible for ancillary equipment not supplied by the Company, which is attached to or used in connection with the Company's Product, or for the operation of the Product with any ancillary equipment, and all such equipment and operation of such equipment with the Product, is expressly excluded from this limited warranty. Furthermore, the Company shall not be responsible for any damage to the Product resulting from the use or operation of the ancillary equipment not furnished by the Company for use with the Product.

The Company extends this limited warranty only to the original end-user. This limited warranty and the remedies hereunder are limited to Products properly used, maintained, stored, installed and used for their intended purpose and use only, in accordance with the Company instructions. This warranty shall not apply to Product installed, operated or maintained in or under abnormal conditions. This warranty is not applicable to any Product, which is not operated and/or installed in accordance with the Company's specifications and or industry practices and standards. This warranty does not extend to any battery power supply included in/with the Product.

This warranty also does not extend to the purchase of opened, used, repaired, repackaged and/or resealed products, including but not limited to sale of such products on Internet auctions sites and/or sales of such products by surplus, bulk resellers, or any individual unauthorized resellers.

Any and all warranties or guarantees shall immediately cease and terminate as to any products or parts thereof which are repaired, replaced, altered, or modified, without the prior express and written permission of the Company.

This warranty sets forth all of the Company's responsibilities for the Product.

**THIS WARRANTY IS GIVEN IN LIEU OF ALL OTHER EXPRESS WARRANTIES. IMPLIED WARRANTIES, STATUTORY OR OTHERWISE, INCLUDING BUT NOT LIMITED TO ANY IMPLIED WARRANTIES OF MERCHANTABILITY OR FITNESS FOR A PARTICULAR PURPOSE, ARE LIMITED TO THE DURATION OF THIS LIMITED WARRANTY. IN NO EVENT, INCLUDING WITHOUT LIMITATION, IN CONTRACT, TORT, STRICT LIABILITY OR WARRANTY, SHALL THE COMPANY BE LIABLE TO THE PURCHASER OR TO ANY THIRD PARTY, FOR ANY DAMAGES OR FOR ANY LOSS OF USE, LOSS OF TIME, LOSS OF LIFE, INCONVENIENCE, COMMERCIAL LOSS, LOST PROFITS OR SAVINGS OR INCIDENTAL, CONSEQUENTIAL OR SPECIAL DAMAGES ARISING OUT OF THE USE OR INABILITY TO USE SUCH PRODUCT. TO THE FULL EXTENT THAT SUCH MAY BE DISCLAIMED BY LAW, COMPANY'S SOLE LIABILITY SHALL BE TO REPLACE OR REPAIR THE PRODUCT.**



**WARNING:** This product can expose you to chemicals including Lead, which is known to the State of California to cause reproductive harm. For more information go to [www.P65Warnings.ca.gov](http://www.P65Warnings.ca.gov)

If you have any questions or for further support, please email us at [service@eproselect.com](mailto:service@eproselect.com)



Intertek  
4004028

CONFORMS TO  
UL STD.1017





**For additional help contact ePro Support  
for assistance with your vacuum.**



**SCAN TO VISIT  
SUPPORT PAGE**

Email [service@eproselect.com](mailto:service@eproselect.com)  
or visit our support page:  
<https://www.eproselect.com/eproselect-support>



**GIVE US A CALL!**  
**1-877-858-EPRO (3776)**

**MADE IN CHINA**

Distributed by ePro USA LLC. Austin, TX ©2024 ePro USA LLC. All rights reserved.



**PLEASE RECYCLE**

Facilities may not exist in your area.

v2.6